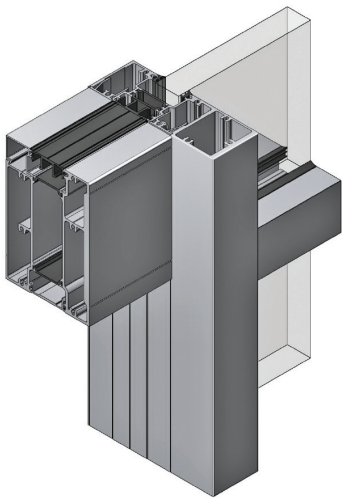




KESTREL
ALUMINIUM SYSTEMS

Technical Specification

Thermal Framing System



For application in schools, retail buildings and public buildings where high thermal performance is required. The Thermal Framing System is a secure and cost effective method of glazing.

Designed to be integrated with the Kestrel window and door suites, the system offers commonality of design to give a uniform aesthetic.

This flexible solution for low rise buildings ensures high thermal performance and meets the required building regulations.

Design Options

- Single or dual colour powder coated
- Double or triple glazing
- Solid infill panels
- Profiles can be shaped
- Heavy duty mullion for larger spans
- Auto header section
- Corner post

Design Standards

- BS EN 12020-2:2016
- BS 3987:1991
- BS EN 12206:2021
- BS EN 14351-1:2006+A2:2016
- BS EN ISO 10077-2:2017



THERMAL FRAMING SYSTEM

Application	Commercial new build and refurbishment
Maximum Frame Width	*
Maximum Frame Height	*
Jointing	Mechanical
Internally Beaded Option	Yes
Externally Beaded Option	Yes
Double Glazing	28-32mm
Triple Glazing	28-32mm
U-Value	1.6 W/m ² k **
Finishes	Mill finish Etched and anodised to BS 3987: 1991 - Silver AA25 or colours on request. Polyester Powder coat paint to BS EN 12206-1:2004
Single or dual colour profiles	Option
Design standards	BS EN 12020-2:2016 BS 3987:1991 BS EN 12206:2021 BS EN 14351-1:2006+A2:2016 BS EN ISO 10077-2:2017

*Size limitations subject to site conditions

**Values stated achieved using centre pane unit of 1.2W.m²K



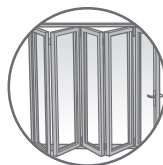
Kestrel Aluminium Systems Ltd

180 Rupert Street, Aston, Birmingham, B7 5DT

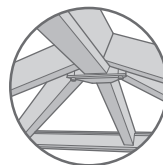
Tel: **0121 333 3575** • Fax: **0121 333 5335** • Email: info@kestrelaluminium.co.uk



WINDOWS



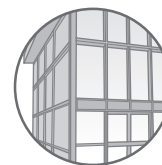
DOORS



ROOFING



SHOPFRONT



CURTAIN WALL

www.kestrelaluminium.co.uk

We operate a continuous development programme and we reserve the right to amend specification without prior notification. Please contact the technical department for further information. All copyright, trademarks and unregistered design rights for the products detailed in this brochure are the property of Kestrel Aluminium Systems Ltd.