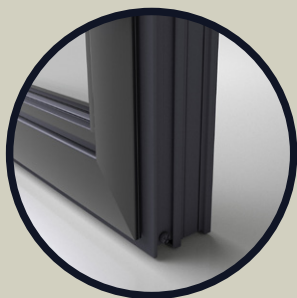
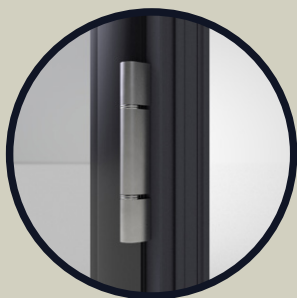




LEGACY
FROM COMAR

Slimline Door



Striking in design, the Slimline Entrance Door takes its cue from the art deco period, yet feels refreshingly modern thanks to a bespoke multi panel design. And it strikes the right performance notes too - like all systems in the Slimline suite, the Entrance door is thermally efficient and features a secure espagnolette locking system.

Available in single or double options that open in or out, the Slimline Door adds a unique, retro-inspired element to any traditional or contemporary property.

*U-values as low as 1.6 W/m²k



The Eco choice



Residential and commercial



Traditional design styling



Double and triple glazed



SLIMLINE

*U values based on CEN sized window



Slimline Door

Features

- Ultra slim sightlines provide superior aesthetics, without compromising on performance
- A choice of simple fabrication methods provide easier & quicker fabrication
- Superior strength
- Exceptional weather performance
- Made from 70% recycled aluminium and 100% recyclable at end of life
- Compliance with PAS24:2022 provides additional reassurance to the homeowner in the event of an attempt at burglary

Technical specification

- U values as low as 1.6 Wm²k can be achieved using double glazing, easily achieving the current Building Regulations for both new build and refurbishment projects
- 72mm sightlines for both open in/out doors
- Outer frame depth - 54mm and 75mm
- Maximum single door dimensions - 1100mm x 2300mm
- Maximum double door dimensions - 2188mm x 2300mm
- Maximum leaf weight 70kg
- Maximum leaf area 2.2m²
- Handle height from bottom of leaf to centre of lever:
 - o Minimum 989mm
 - o Maximum 1039mm
- Glazing options: single - triple glazed options can be accommodated
- For full details refer to the fabrication manuals

Performance and Testing

- Weather tested to BS6375: Part 1
- Operation and strength tested to BS6375: Part 2
- Additional performance characteristics BS6375: Part 3
- Security tested PAS 24:2022

Finishes

- Available in mill finish & black 9005 as standard
- Other RAL colours available on short lead times
- Astragal bars can be added to further enhance the design features of the window

Applications

- Residential
- Commercial

Comar Architectural Aluminium Systems

The Willow Centre, 17 Willow Lane Mitcham, Surrey CR4 4NX United Kingdom

Telephone: 020 8685 9685 | Email: info@legacysuite.co.uk